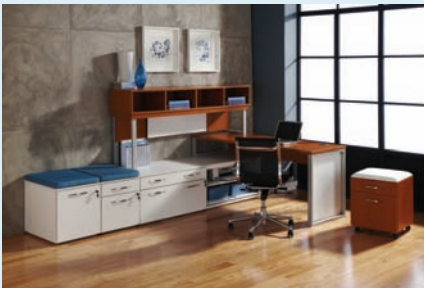




# PHOTOREALISTIC 3D RENDERINGS

## WHY 3D DIGITAL IMAGING EXCELS OVER PHOTOGRAPHY

### EXISTING PHOTOGRAPHY



### COMPUTER GENERATED IMAGE



This entire scene was created from scratch to show new finishes



Once a 3D model is created, any number of color/finish/fabric variations of your product can be produced easily and cost-effectively.

Traditional photography is often time-consuming, expensive and limited in terms of the different options you can show.

In contrast, we don't even need the physical product to create a 3D model.



Visit  
[animatedvision.com](http://animatedvision.com)  
for additional  
information





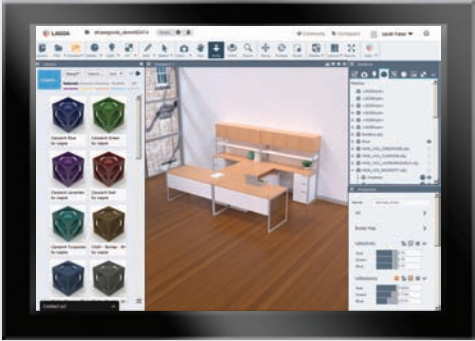
## WHY TRUST ANIMATED VISION WITH YOUR PROJECTS?

### EXPERTISE

True-to-life photorealistic renderings are only possible when using highly detailed 3D models, physically accurate lighting and real world materials.

Fortunately for our clients, this is what we do for a living. As the providers of Visual Planner, our web-based space-planning tool, we have been creating 3D CAD models for the past 8 years.

During that time, we have created over 40,000 3D models for a variety of products including furniture, architectural hardware and playground equipment.



### TECHNOLOGY

Utilizing the latest cloud-based solutions, we are able to significantly reduce the time and cost of rendering production and pass on those savings to our clients.



### 3D MODELLING

When it comes digital 3D imaging, it all starts with your 3D model.

Highly detailed and exact 3D models lay the foundation for everything that follows.

**Whether you need 10 or 10,000 images, you can leverage the latest technologies and take advantage of Animated Vision's rendering solutions.**

